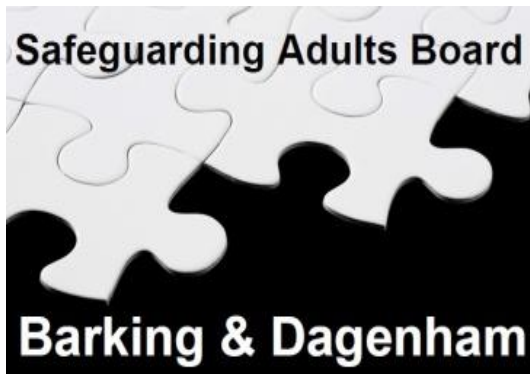


# Safeguarding Annual Reports

Sarah Baker

Independent Chair

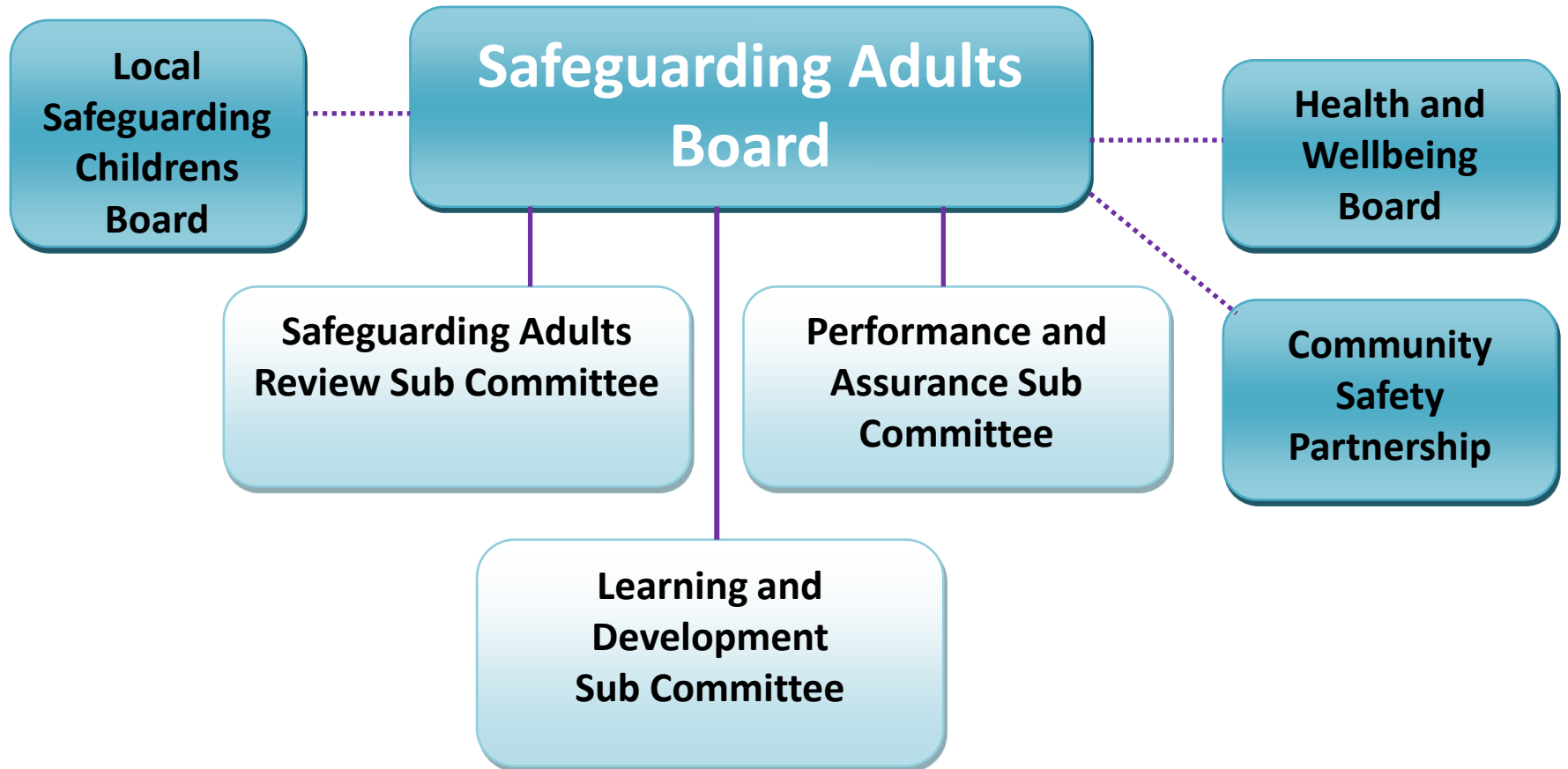


# SAB Legislation

## The Care Act 2014

- to co-ordinate the safeguarding work of agencies, and
- to ensure that this work is effective.

# Safeguarding Adults Board



# SAB - Principles

- **Accountability** - Accountability and transparency in delivering safeguarding.
- **Empowerment** - People being supported and encouraged to make their own decisions and informed consent.
- **Protection** - Support and representation for those in greatest need.
- **Proportionality** - Proportionate and least intrusive response appropriate to the risk presented.
- **Prevention** - It is better to take action before harm occurs.
- **Partnership** - Local solutions through services working with their communities. Communities have a part to play in preventing, detecting and reporting neglect and abuse.

# SAB Key Achievements

- **Development of three year Strategic Plan.**
- **Adoption of London Multi Agency Policy & Procedures.**
- **Safeguarding Adult Reviews.**
- **Monitoring provider concerns.**
- **Development of a SAB Communications Strategy.**
- **Multi agency training events.**
- **iCare Campaign.**

# SAB Data

- **1362 safeguarding concerns reported to Local Authority.**
- **492 concerns progressed to an enquiry.**
- **87 safeguarding investigations.**
- **1 Safeguarding Adult Review.**



It is already the second time this week that she hasn't had anything to eat. Her son has used her pension to buy alcohol.

**iCore**

### If you don't do something, who will?

For some adults it's hard to protect themselves. Abuse hurts at any age. It is time we stop it.

Don't ignore the abuse of adults at risk - report it.

Safeguarding is everybody's business. Physical, financial, sexual or emotional abuse, neglect or discrimination.

Are you worried? Not sure what to do? Contact us

Call us on 020 8227 2915  
E-mail [safeguardingadults@lbbd.gov.uk](mailto:safeguardingadults@lbbd.gov.uk)  
Or visit [www.lbbd.gov.uk/icare](http://www.lbbd.gov.uk/icare)  
In an emergency always dial 999.

The Barking and Dagenham Safeguarding Adults Board is a statutory board that works together to protect vulnerable residents of Barking and Dagenham from abuse.



His bin has been empty for weeks, but there are layers of rubbish in his house. Are you aware of all the support available?

**If you don't do something, who will?**

**iCore**

Don't ignore the abuse of adults at risk - report it.  
Safe for you safe for them.

Are you worried?  
Not sure what to do?  
Contact us

Call us on 020 8227 2915  
E-mail [safeguardingadults@lbbd.gov.uk](mailto:safeguardingadults@lbbd.gov.uk)  
Or visit [www.lbbd.gov.uk/icare](http://www.lbbd.gov.uk/icare)  
In an emergency always dial 999.

The Barking and Dagenham Safeguarding Adults Board is a statutory board that works together to protect vulnerable residents of Barking and Dagenham from abuse.



# SAB Priorities for 2016/17

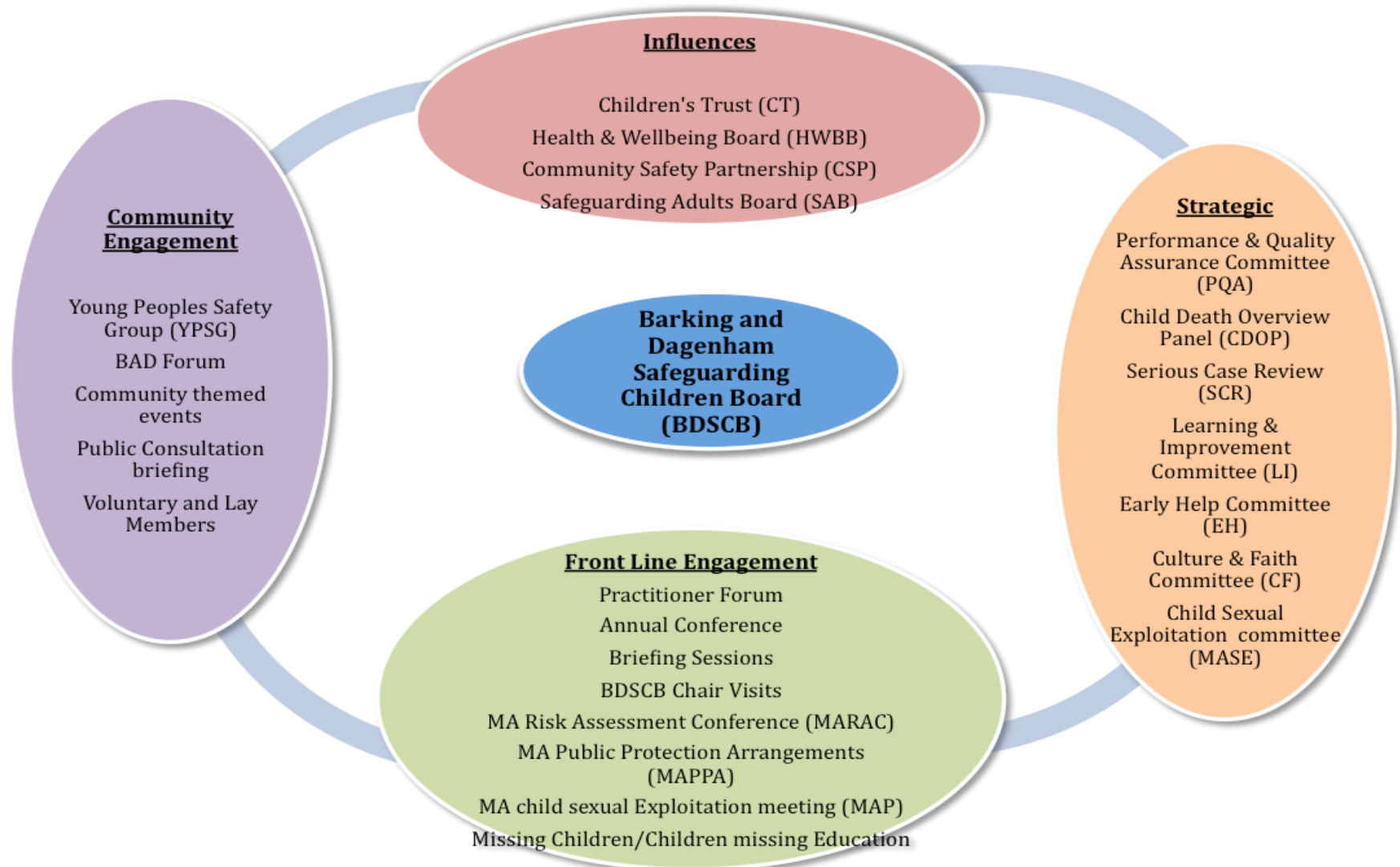
- **Implement the Making Safeguarding Personal agenda.**
- **Implement a new advocacy pathway.**
- **Learning from SARs and joint training opportunities.**
- **Focus on the Prevent agenda.**
- **Mental Capacity Act (MCA) and Deprivation of Liberty Safeguards (DoLs) training opportunities and support to apply this to practice.**
- **Development of effective performance information for the Board.**
- **Quality assurance processes embedded.**



# LSCB Legislation

- **Children Act.**
- **Working Together.**
- **The Wood Review.**

# Safeguarding Childrens Board



# LSCB Key Facts - CSE

- 130 children were flagged as at risk of or subject to CSE - an increase of 37%
- 5th highest number of incidents in London according to police data
- 88% of the children and young people were female, a slight increase
- 81% were teenagers, a slight decrease
- 56% were white British, a 5% decrease
- 25% of victims had been reported missing with a high incident of repeated missing reports, a 5% increase
- 33% open to Children's Social Care

# LSCB Key Facts – Domestic Abuse

No of Contacts 11,393:

- of which domestic abuse a stated issue 2228.
- % of contacts in which domestic abuse a stated issue 19.6.

Number of Referrals 3215:

- of which domestic abuse a stated issue 432.
- % of referrals in which domestic abuse is a stated issue 13.4.

# Serious Case Reviews

- Child H was initiated in 2013, completed and published in 2015:
  - supervision - reflective and clinical
  - impact/risk of all family members
  - professional optimism/curiosity.
- Child B was initiated in 2015 and completed and published in 2016:
  - information sharing
  - compliance with procedures
  - the ‘invisible’ father
  - professional optimism
  - disguised compliance.

# Voice of Children and Young People

- Young Peoples Safety Group
- Flip Side
- BAD Forum
- NELFT – CAMHs
- BHRUT
- Young Peoples Take Over Day.

# LSCB Priorities 2016/17

- Board members are assured that arrangements are in place to identify and safeguard groups of children who are particularly vulnerable.
- Board partners will own and share accurate information which informs understanding of safeguarding practice and improvement as a result.
- The Board will see children and young people as valued partners and consult with them so their views are heard and included in the work of the LSCB.
- Arrangements for Early Help will be embedded across agencies in Barking & Dagenham who work with children, young people and their families.
- Board partners will challenge practice through focused inquiries or reviews based on performance indicators, practitioner experience and views from children and young people. Collectively we will learn and improve from these reviews.